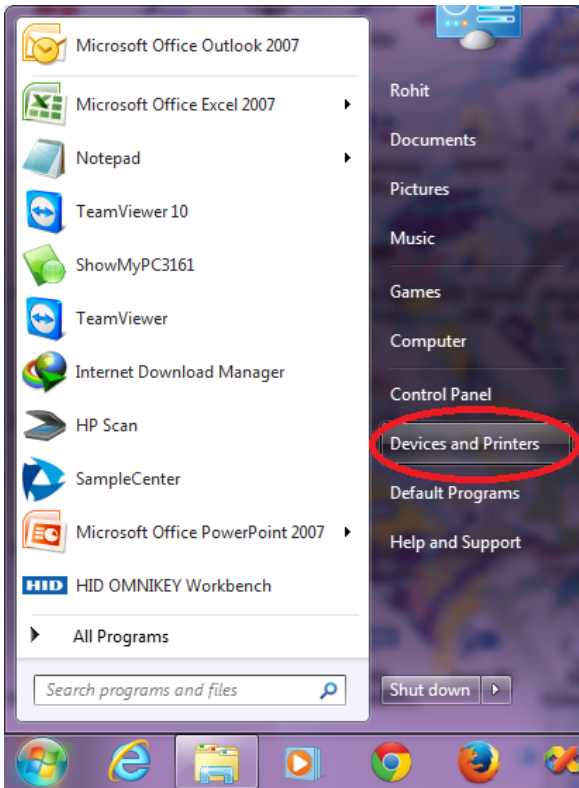


USER GUIDE FOR AADHAAR PRINTER DRIVER SETTINGS (Magicard Enduro/Enduro+)

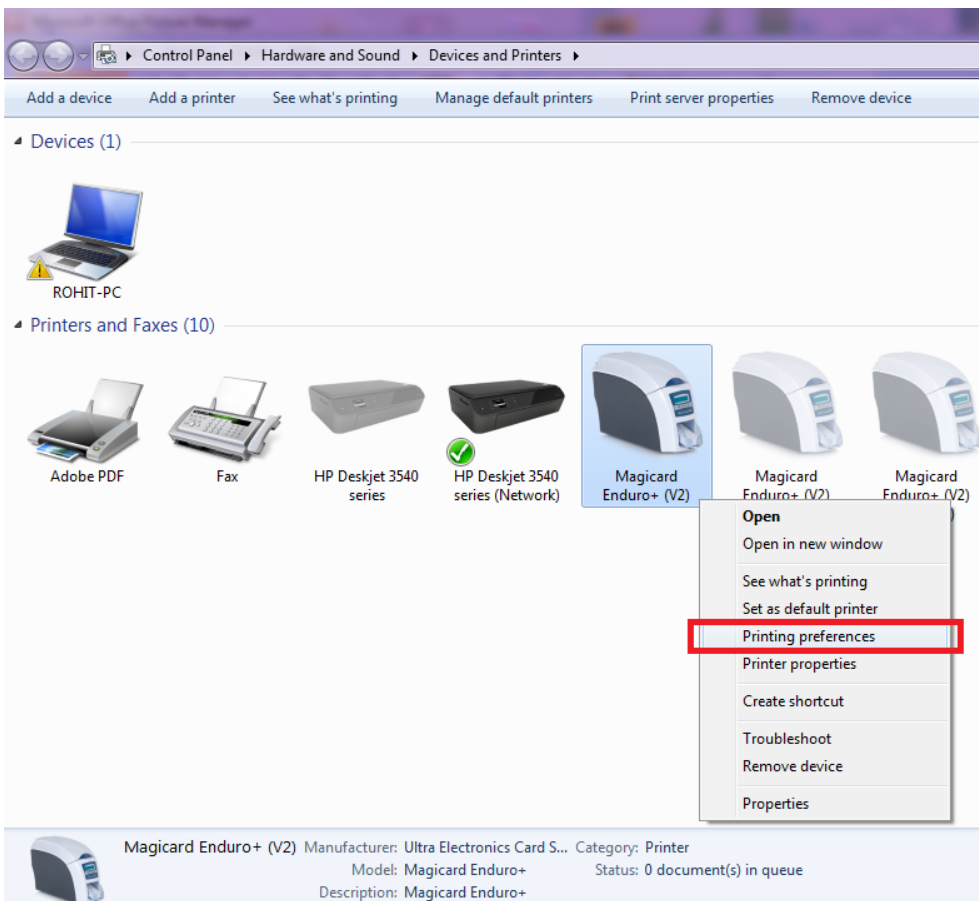
Latest Printer Driver Download Link: <https://support.ultraid.com/solution/magicard-enduro-driver/>

Old Driver Download Link: <http://www.spectrobiz.com/MagicardOldDrivers.rar>

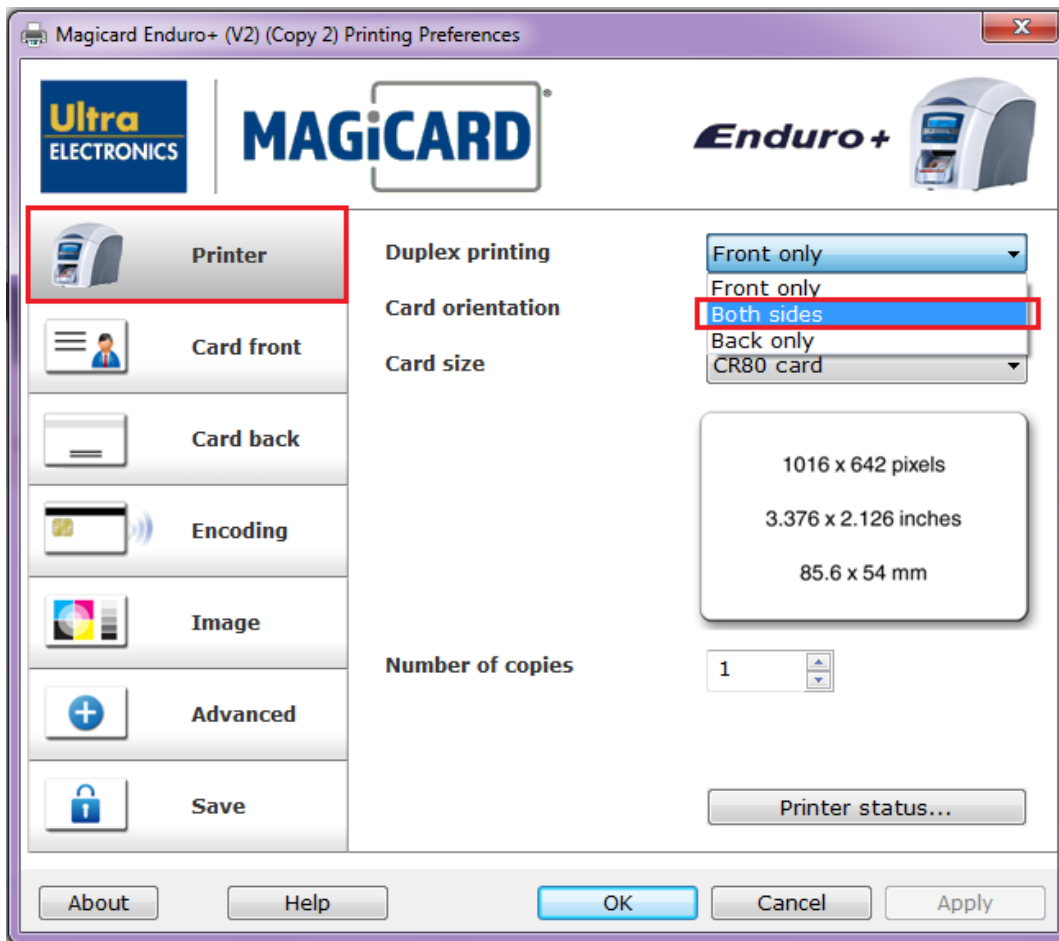
STEP 1: Go to “Start” Menu → “Devices and Printers”.



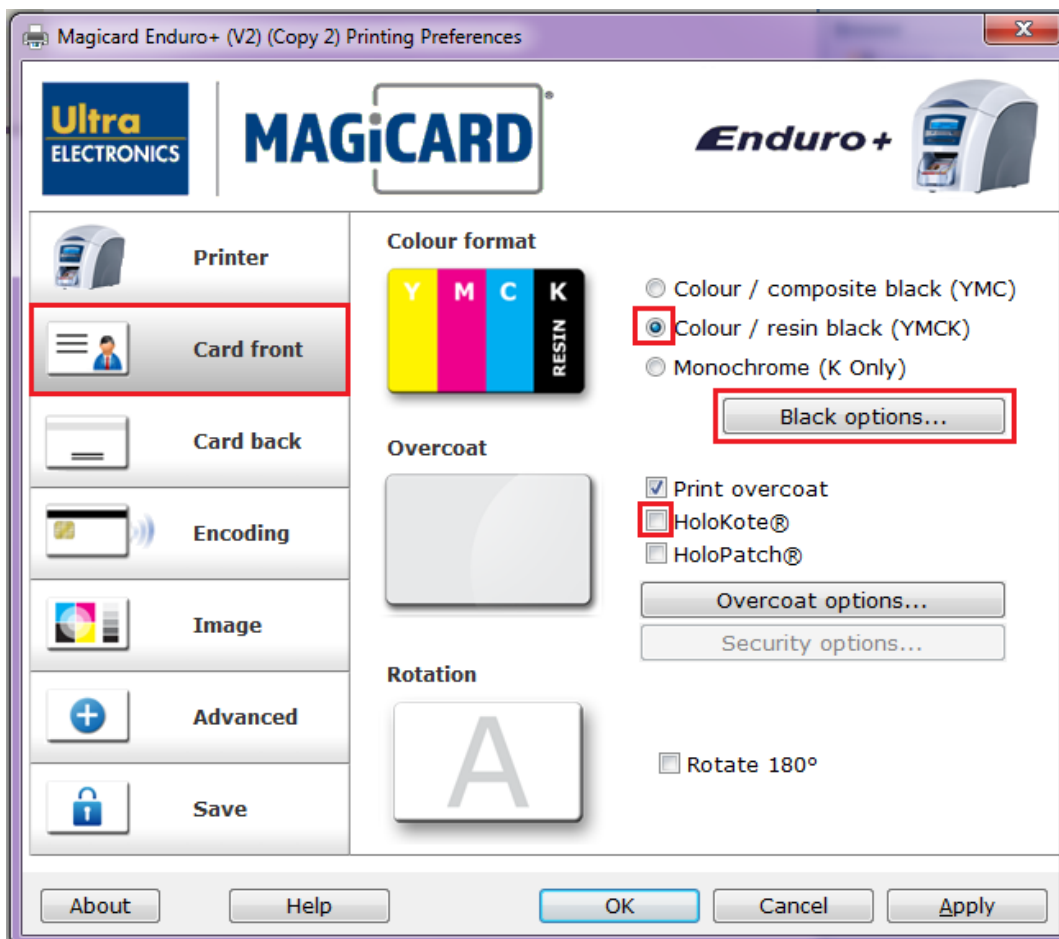
STEP 2: Find the active instance of “Magicard Enduro/Magicard Enduro+ (V2)” → Right Click → Click on “Printing Preferences”.



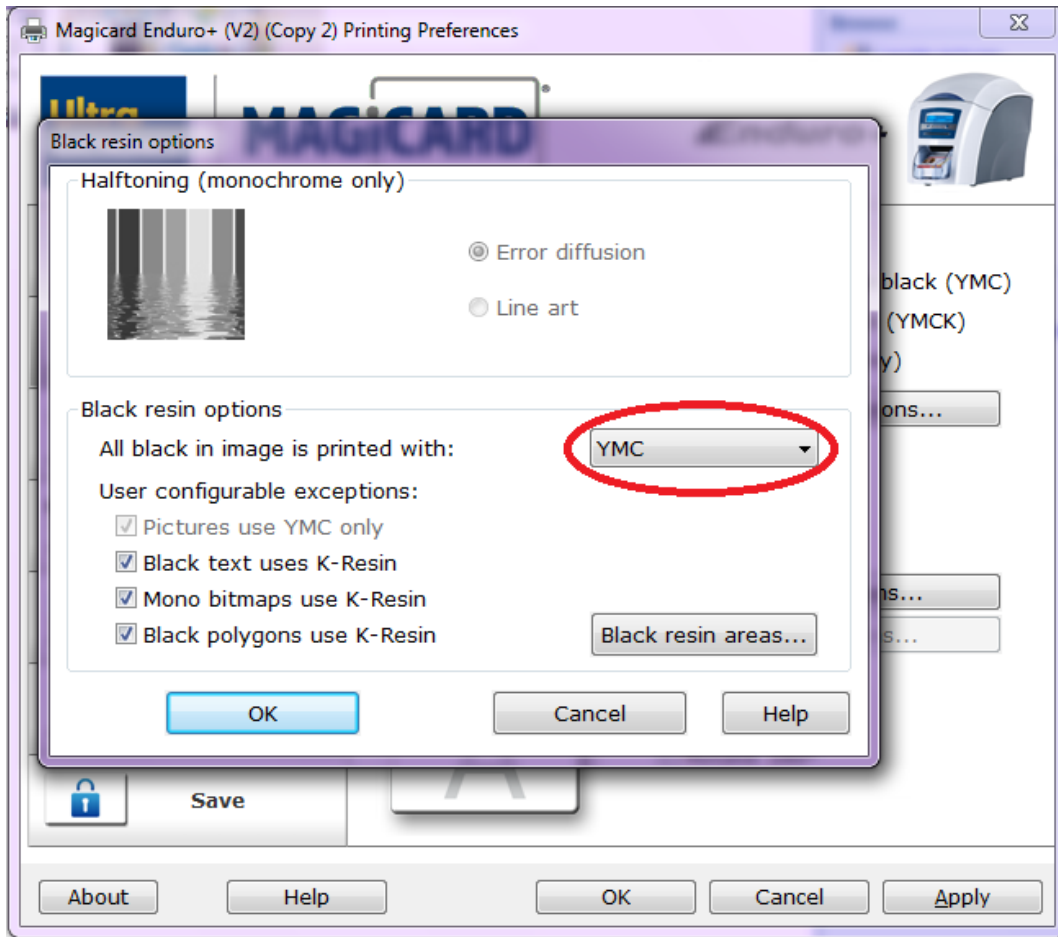
STEP 3: In the “Printer” tab, select “Both sides” from the “Duplex printing” drop-down list.



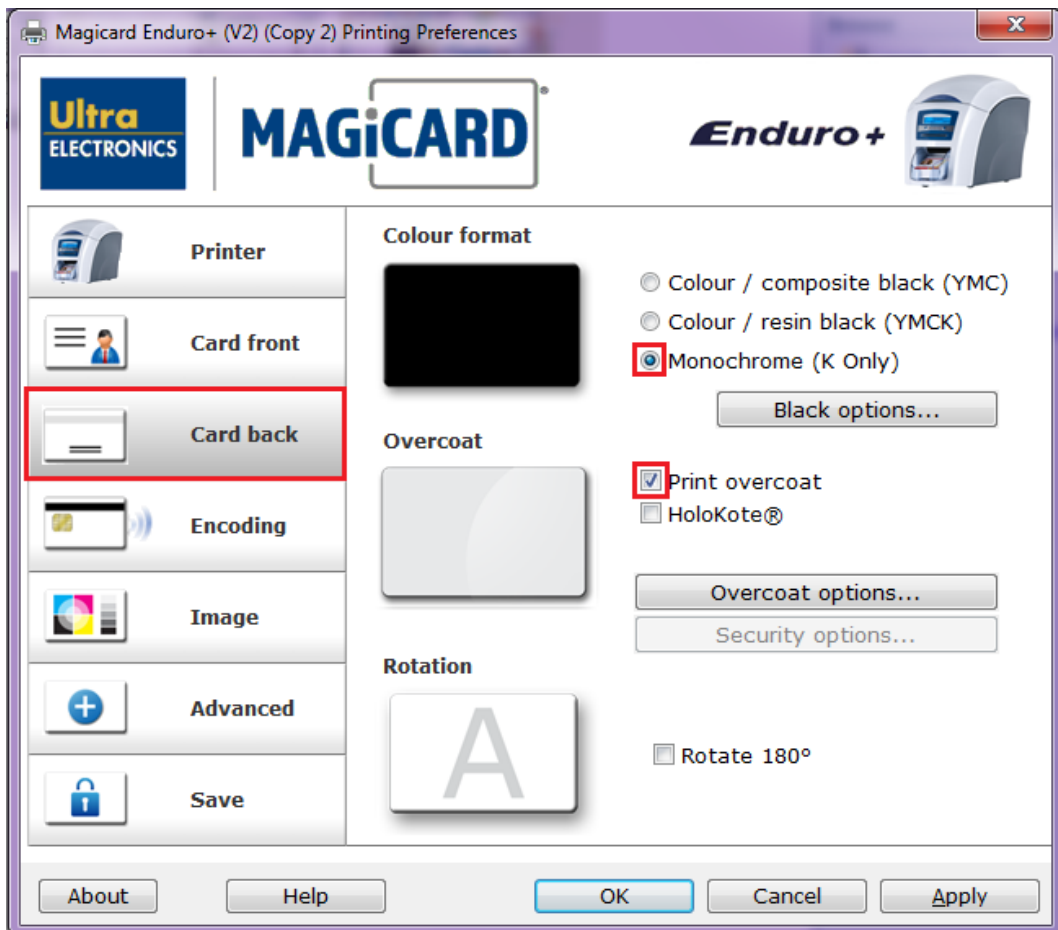
STEP 4: Go to “Card front” tab → In “Colour format”, “Colour / resin black (YMCK)” should be selected → Uncheck “HoloKote” → Click on “Black Options”.



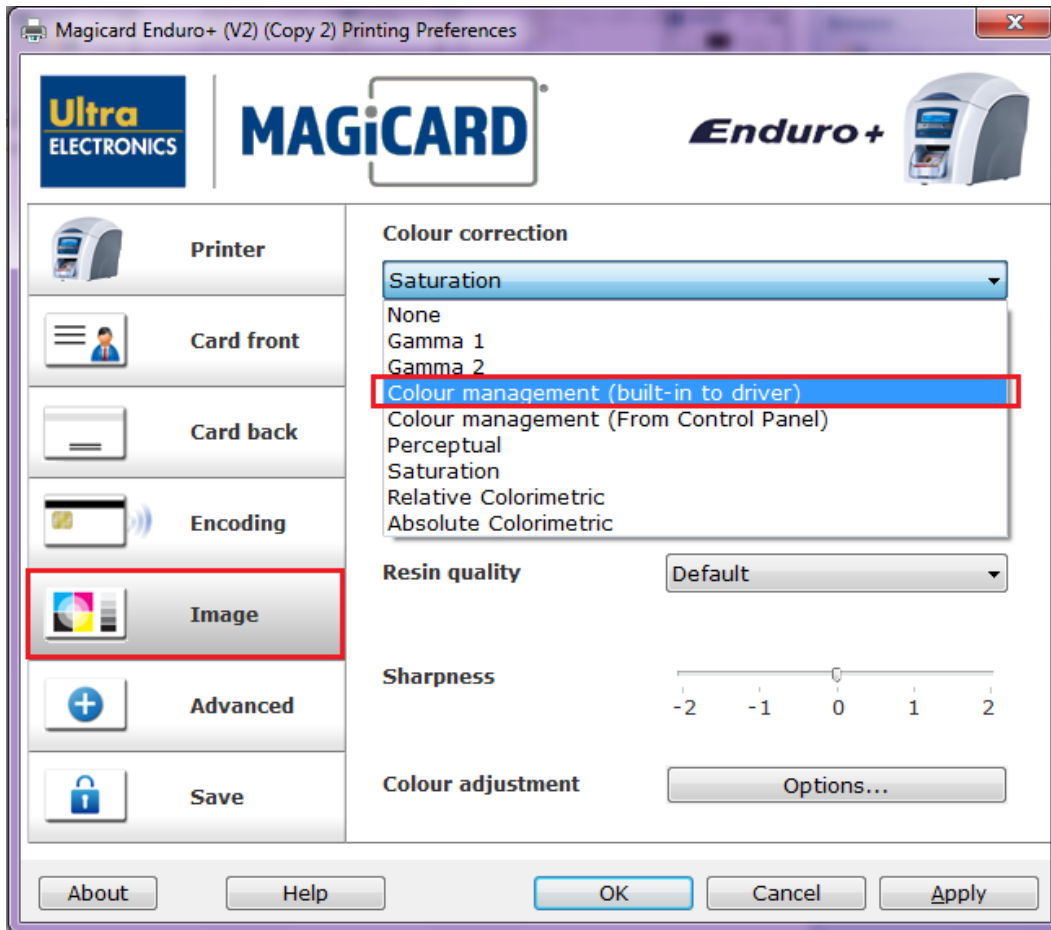
STEP 5: In “**Black resin options**” dialog box, select the “**YMC**” option & other check boxes as displayed in the figure below → Click on OK.



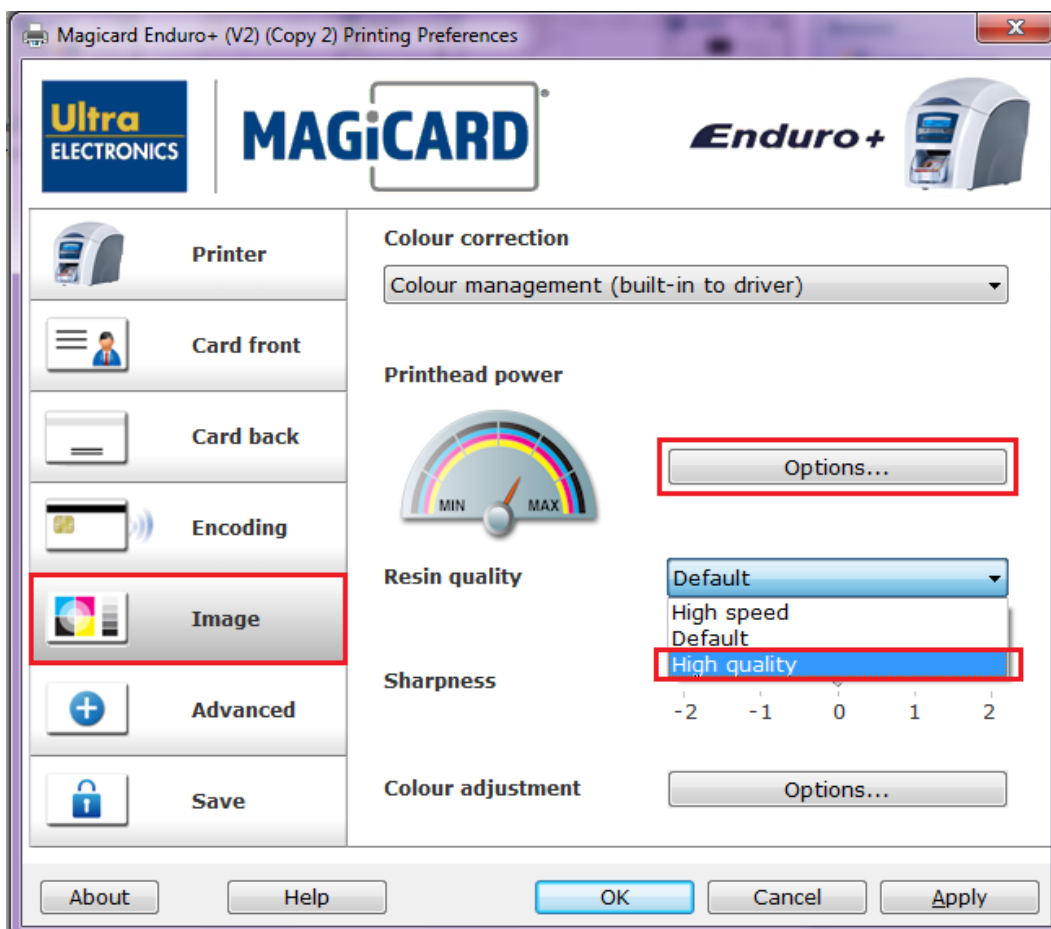
STEP 6: Go to “**Card back**” tab → In “**Colour format**”, “**Monochrome (K Only)**” should be selected → Select “**Print overcoat**” option → Uncheck “**HoloKote**”.



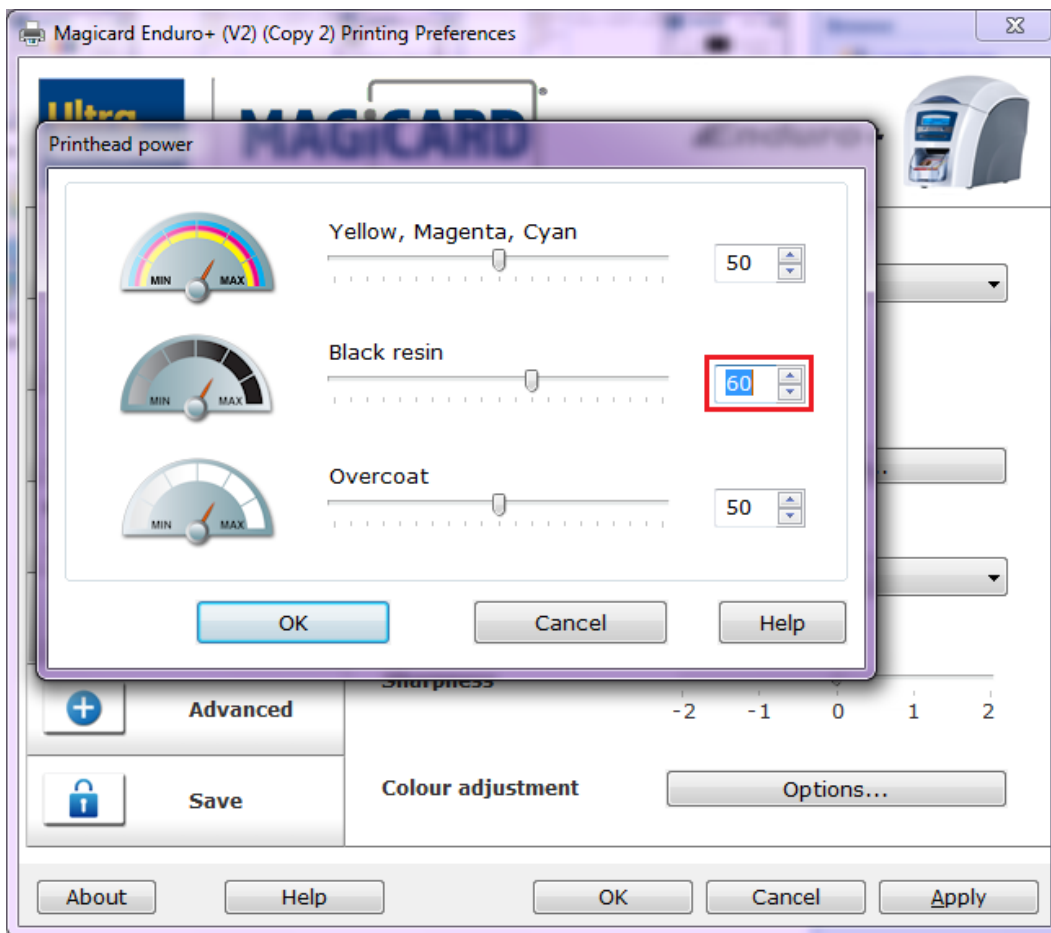
STEP 7: Go to “Image” tab → Select “Colour management (built-in to driver)” option from the “Colour Correction” drop-down list (For **Magicard Enduro** printers, select “Gamma 2”).



STEP 8: In the same tab → Select “High quality” option from the “Resin quality” drop-down list → Click on “Options” button under “Printhead power”.



STEP 9: In “Printhead power” dialog box, adjust “Black resin” to 60 (Don’t increase it to more than 60) → Click on OK → Apply → OK → Done.



Note: In the above window (Printhead Power), you can increase or decrease the value of **Yellow, Magenta, Cyan** to lowest “40” & highest up to “65” based on the printed output you get on the card.

- Now your **Magicard Enduro/Enduro+** Printer is ready for printing Double-Sided Aadhaar Cards.
- You can repeat the above steps for every instance of **Magicard Enduro/Magicard Enduro+ (V2)** which is created when you connect the Printer USB cable to a different USB Port.
- This guide has been prepared for use of **Magicard Enduro/Enduro+ Double-Sided Card Printer with the MA250-YMCKO-KO Half Panel Color Ribbons.**

*** This User Guide is brought to you by:**
SpectroBiz Softech Pvt. Ltd.

Regd. Office: At - Ratanpur, P.O. Krupasindhupur,
Dist - Ganjam, Berhampur - 761001, ODISHA.

E-mail: info@spectrobiz.com

Mob: +91 93794 27535

